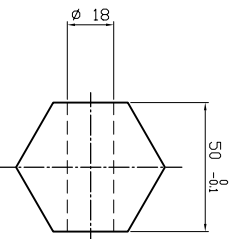


OUTPUT SHAFT

TECHNICAL DATA

DESCRIPTION: PG 161 PE 3.55 12012													
PLANETARY GEARBOX	BRAKE												
RATIO CONT TORQUE MAX TORQUE INPUT SPEED LUBRICANT OIL QUANTITY	<table border="1"> <tr> <td>I = 36</td> <td>TYPE</td> </tr> <tr> <td>170 daNm</td> <td>BRAKING TORQUE Min.</td> </tr> <tr> <td>340 daNm</td> <td>RELEASE PRESSURE Min.</td> </tr> <tr> <td>max 2800rpm</td> <td>MAX PRESSURE</td> </tr> <tr> <td>ISD 3448</td> <td>LUBRICANT</td> </tr> <tr> <td>15 l</td> <td>OIL QUANTITY</td> </tr> </table>	I = 36	TYPE	170 daNm	BRAKING TORQUE Min.	340 daNm	RELEASE PRESSURE Min.	max 2800rpm	MAX PRESSURE	ISD 3448	LUBRICANT	15 l	OIL QUANTITY
I = 36	TYPE												
170 daNm	BRAKING TORQUE Min.												
340 daNm	RELEASE PRESSURE Min.												
max 2800rpm	MAX PRESSURE												
ISD 3448	LUBRICANT												
15 l	OIL QUANTITY												
MOTOR FITTINGS	MOTOR												
DESCRIPTION 12012 40X36 25-CH.8 2M12	TYPE PART. N. DISPLACEMENT												



☐	BREATHER PLUG	☑	DRAIN PLUG
▽	FILLING PLUG	⊗	ELBOW
●	LEVEL PLUG	⊕	EXTENSION

PART. N.	PAINT COLOR	CUSTOMER
WEIGHT 30 Kg	MOUNTING POSITION V1	

 haumea <small>mechanics on demand</small>	DATE
	SGN. N.DIS

Haumea S.r.l. - Via Nicola Sacco, 12 - 47122 Forlì (FC) ITALY - Tel. +39 0543 779518